

## CREDITS

Architects & Associates	R C C	Legal	Branding
CUBIX	G A Bhilare	Adv. Prassana Darade Adv. Kamlesh Chhajed	Bright Brain

📍 Survey No 41/5 Sai Canary New Rd, Near Balewadi High Street  
Balewadi, Pune, Maharashtra 411045

### Contact

**9766502949 , 7722089085**



MahaRera Registration Number P52100028094  
available on website maharera.mahaonline.gov.in



RIGVED

# UPTOWN

you are where you live

---

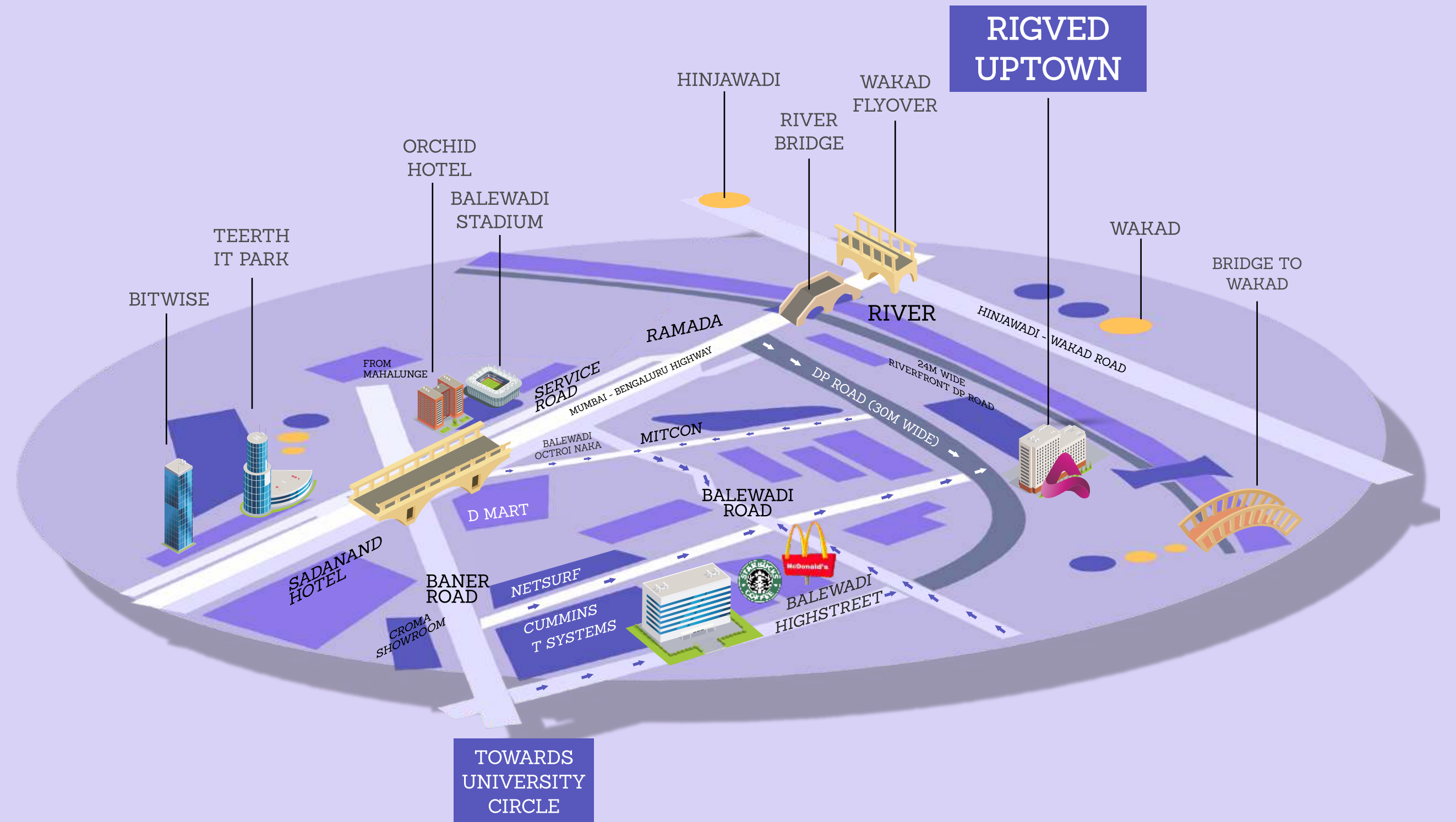
PREMIUM 2BHKs  
Near Balewadi High Street

Disclaimer: The perspective images are the artistic impressions & may not be to the scale or may not represent actual facade / elevation. The details of windows, paints, elevation features, landscaping, ground development, trees etc. in this perspective is an artist's impression and would be different to actual construction of building and development. The viewers affirm that he / she has not taken his/ her decision of purchase/booking by viewing this perspective. The company is not responsible for the action of the viewer's booking / purchasing a unit relying on this perspective.

THE BEST OF  
*Balewadi*

IN YOUR BACKYARD

From excellent-connectivity to peaceful by-lanes, from the snazziest of restaurants to the trendiest of bars; Balewadi has UPSURGED to the epitome of modern city living. Best of Pune's Schools, Colleges, IT hubs, Hospitals is now just a walk away!







*Uptown*

YOUR DREAMS TO  
REALITY

A change that shifts our perspective, a change that drives us towards futuristic opportunities; a change that reflects on our family's upbringing for generations to come.

Presenting RIGVED UPTOWN: A world curated to offer you the best of everything and keep the roller coaster of life go UP & UP & UP!





# Upshift

## YOUR LIVING QUOTIENT

With excellent craftsmanship and intricate designs, Rigned Uptown displays the perfect amalgamation of strategically located and beautifully constructed abodes, which bring you the best of Pune's city life amidst its lush green surroundings.

These contemporary styled 2 BHKs in the heart of Balewadi, offer adequate natural lighting, good ventilation and community life that keeps you connected to the vibrancy of the outer world without having to worry about its hustle and bustle.



# Upstream

TO HEALTHY & HOLISTIC LIVING

Just like a cherry on a cake, amenities around an abode act like accessories that add supplementary value quotient to our living.

With Rigved Uptown's thoughtfully designed amenities that are designated for taking care of you and your family's overall development, open doors to a life full of adventure and ease.

11+

PREMIUM  
GROUND LEVEL  
AMENITIES

15+

ROOFTOP LEVEL  
AMENITIES







GROUND LEVEL  
*Amenities*

- 1. PARTY LAWN
- 2. BUFFET COUNTER
- 3. GYMNASIUM

- 4. CLUBHOUSE
- 5. LAWN AREA

- 6. STAGE AND  
CHESS BOARD
- 7. AMPHI SEATING



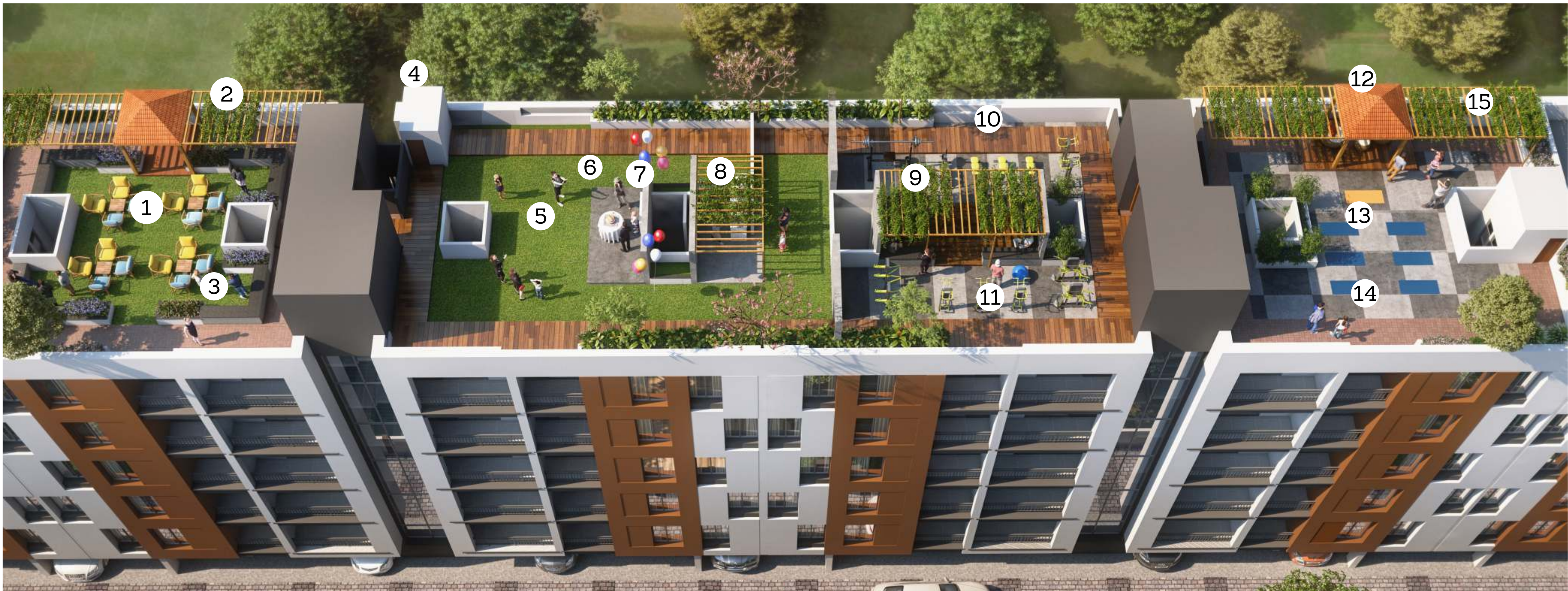


GROUND LEVEL  
*Amenities*

1. PLAY AREA (RUBBER FLOORING)  
2. PERGOLA AND TRELIS

3. SEATING  
4. GAZEBO





ROOFTOP LEVEL  
*Amenities*

- 1. SEATING AREA
- 2. PERGOLA
- 3. SEATING
- 4. TOILET
- 5. PARTY LAWN

- 6. STAGE
- 7. FEATURE WALL
- 8. BUFFET AREA WITH PERGOLA
- 9. SEATING WITH PERGOLA
- 10. OPEN GYM


- 11. WOODEN PATHWAY
- 12. GAZEBO
- 13. YOGA AND MEDITATION AREA
- 14. PATHWAY

- 15. PERGOLA SEATING



# Uptossing

## ARCHITECTURAL MAESTRY & INTRICATE DETAILS FOR YOU



Unravelling intricate details carved by architectural expertise to provide you with a state-of-the-art living experience. A personal touch, quality that screams perfection and corners that embraces beauty everyday.

## SPECIFICATIONS

### STRUCTURE

- RCC Structure Designed With Earthquake Resistant Frame.

### MASONRY

- Fly Ash Bricks / AAC Blocks Masonry Work

### KITCHEN

- Steel Grey Granite Kitchen Platform With SS Sink & Dado Up To 2' Height
- Provision For Washing Machine In Dry Balcony

### UTILITIES

- Sewage Treatment Plant
- Rainwater Harvesting
- Underground And Overhead Tanks For Water Storage
- Firefighting System
- 100% Power Backup For Common Areas & Lift

### SECURITY

- CCTV Cameras For Common Areas
- Security Cabin
- Boom Barriers

### WALL FINISH

- Gypsum / POP Finish For Wall At Internal Side With OBD Paint
- Sand Faced Plaster For Exterior Surface With Weather Proof Paint

### BATHROOMS

- Concealed Plumbing Of ISI Mark
- C.P. Fittings -Jaguar Or Equivalent
- Premium Sanitary Fittings - Floor / Wall Mounted - Jaquar Or Equivalent
- Designer Dado Wall Tiles Upto Lintel Level
- Provision For Electric Geyser Point
- Provision For Exhaust Fan Point
- Solar Water Connection in Common Washroom

### FLOORING

- 24" X 48" Vitrified Tiles Across The Apartment
- Anti-skid Ceramic Tiles For Bathroom & Dry Balcony

### ELEVATORS

- Kone Or Equivalent

### ELECTRIFICATION

- Concealed Internal Electrical Wiring - Finolex / Polycab / Havells Or Equivalent
- Modular Switches - L&T Or Equivalent
- Switch Gears - L&T Or Equivalent
- Power Points For Refrigerator / Microwave & Other Gadgets In Kitchen
- Power Point For Washing Machine In Dry Balcony
- Geyser Points In All Toilets
- Provision For TV Points In Living & Master Bedroom
- Provision For AC Point In Both Bedrooms

### DOORS & WINDOWS

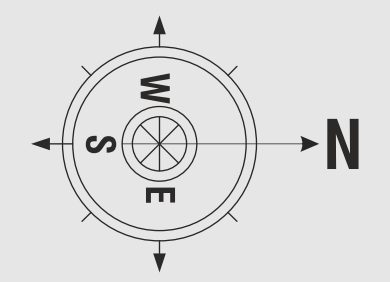
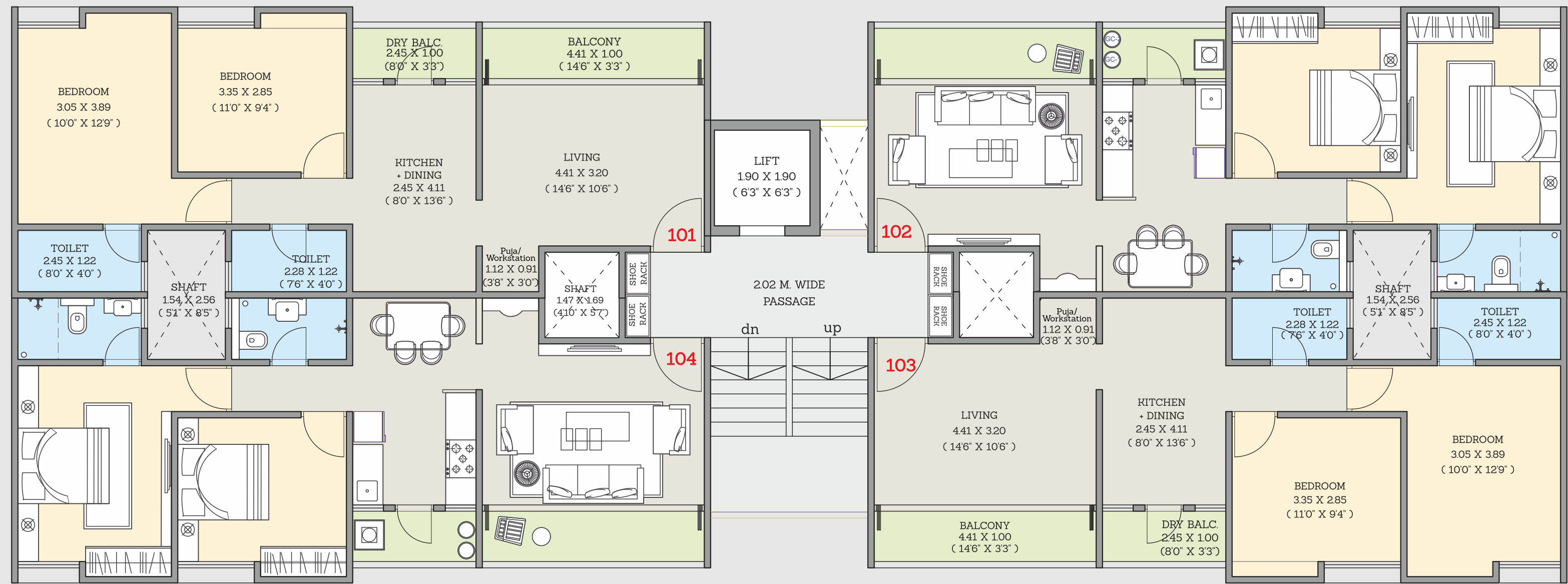
- Main Door & Internal Room Doors - Flush Doors with Laminate & Wooden Frames
- Bathroom Doors - Flush Doors With Laminate And Granite Frames
- Two Track Powder Coated Aluminium Sliding Windows With Mosquito Nets
- MS Grills For Safety And Security
- Natural Stone Window Sill
- Door Hardware - Cylindrical Lock Of Europa Or Equivalent
- MS Railing in Balconies



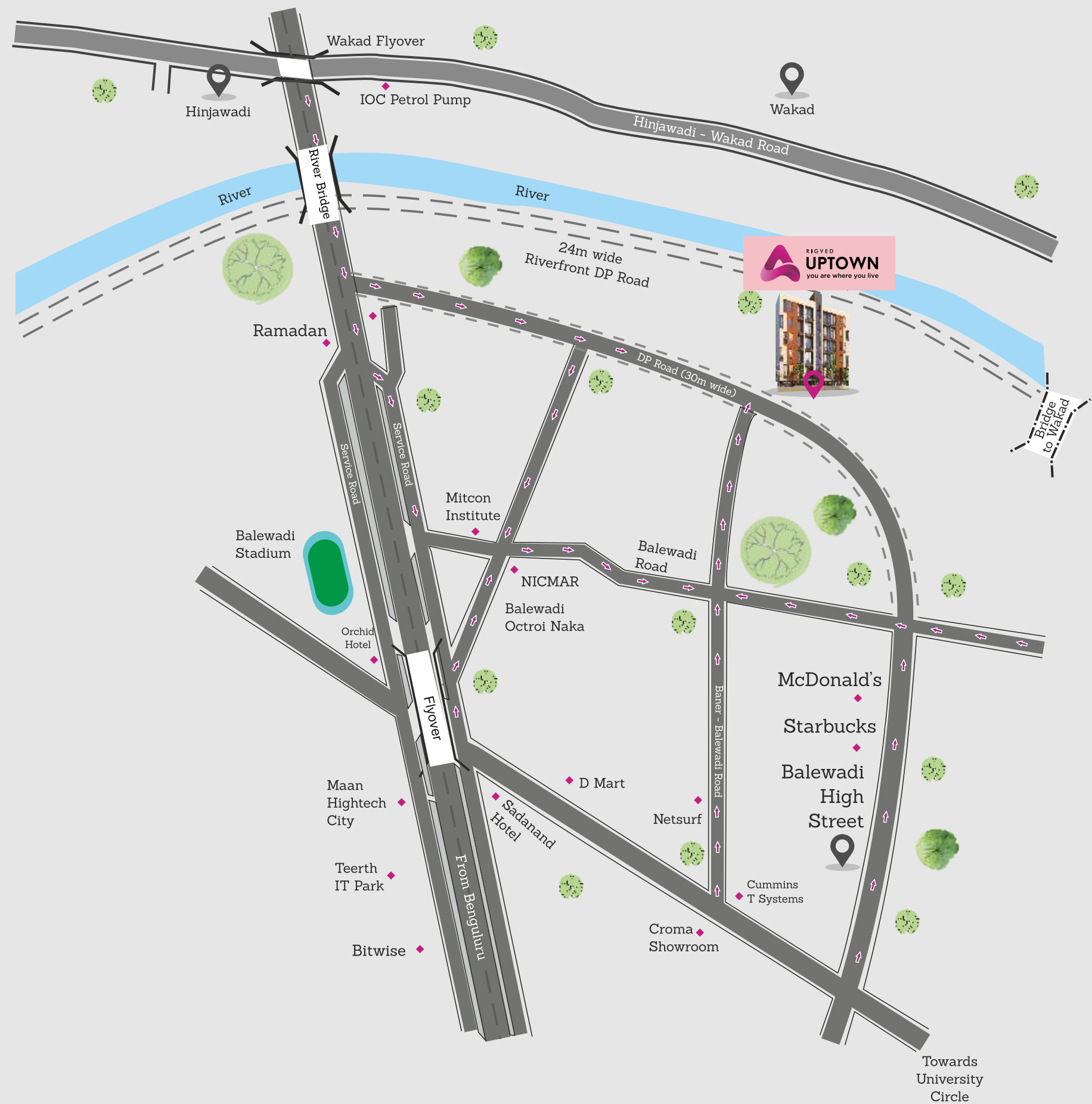
WING - A1 TO A8  
 TYPICAL FLOOR PLAN  
 ( 1<sup>st</sup>, 2<sup>nd</sup>, 3<sup>rd</sup>, 4<sup>th</sup> & 5<sup>th</sup> Floor )

AREA STATEMENT

FLAT NO.	FLAT TYPE	CARPET AREA		TOTAL CARPET AREA (SQ.M)	TOTAL CARPET AREA (SQ.FT.)
		FLAT CARPET (SQ.M)	OPEN BALC. (SQ.M)		
101, 102, 103, 104	2 BHK	59.40	6.86	66.26	714.00







#### Sports/Colleges/Schools {within 1 - 4 km}

- Balewadi Sports Complex - 2 mins
- Bharti Vidyapeeth - 2 mins
- Rabindranath Tagore School of Excellence - 2 mins
- Vibgyor High - 2 mins
- The Orchid School - 5 mins
- DAV Public School - 10 mins
- Eurokids - 5 mins
- Tulips Academy - 5 mins
- MITCON - 2 mins
- NICMAR - 2 mins
- CM International - 3 mins
- Footprints Play School - 2 mins
- Sanskruti - 2 mins
- Kidzee - 2 mins

#### Healthcare {within 2 - 6 km}

- Jupiter Hospital
- Columbia Asia Hospital
- Lifepoint Multispeciality Hospital
- Surya Hospital
- Umarji Mother & Child Care
- Lifeline Hospital

#### Major IT & Work Spaces {within 2 - 4 km}

- Hinjawadi IT Park
- Veritas
- Bitwise
- Cummins India
- Teerth Technospace
- Amar Business Park
- Xoriant
- Siemens
- T- Systems

#### Malls/Hypermarkets/High Street {within 2 - 5 km}

- Balewadi High Street
- McDonald's
- D Mart
- R- Mart
- KK Bazaar
- Xion Mall
- The Orchid Hotel
- Sadanand Hotel
- Vivanta By Taj
- Holiday Inn
- Westend Mall / Cinepolis
- Westside
- Phoenix Mall (Wakad)
- E- Square

#### Public Transport & Connectivity {within 2 - 3 km}

- Metro Station
- Bus Stop
- Pune - Mumbai Highway
- Mumbai - Bengaluru Highway

# Balewadi

WHERE EVERYTHING  
IS AROUND YOU



# Completed Projects



Blossom & Springs  
Baner-Pashan Link Road



Sai Nephele  
Baner



Span O' Life  
Kharadi



Sai Luxaria  
Baner



Rigved Lifespaces  
Baner Road



Auraville Bavdhan  
Bavdhan



Mark One, Nashik  
Gangapur Road Nashik



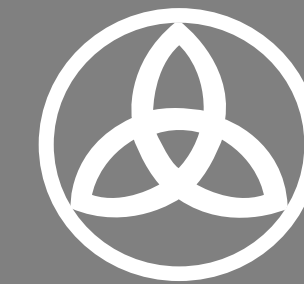
Sai Niwara  
120 Acres Township of Rowhouses,  
Flats, Bungalows at Shirdi



Maza Niwara  
Kopergaon



Adinath Enclave  
Kopergaon



# RIGVED

Only once in a generation, comes an organization that challenges the paradigms, sets new standards and changes the way the entire industry thinks. A mission that Rigved strives towards, is providing meticulously planned abodes which surpass all the parameters of perfection. Keeping the focus intact on delivering spaces, the core values of our projects revolve around durability and reliability.

With a decade old experience in construction, Rigved aims to build thoughtfully designed and efficiently planned homes for your comfort & convenience. This project is developed by Rigved Projects LLP. We don't just build homes, we build memories.