




RIGVED
UPTOWN
you are where you live

CREDITS

<i>Architects & Associates</i>	<i>RCC</i>	<i>Legal</i>	<i>Branding</i>	<i>MEP</i>
<i>CUBIX</i>	<i>G A Bhilare</i>	<i>Adv. Prassana Darade Adv. Kamlesh Chhajed</i>	<i>Bright Brain</i>	<i>VKE</i>

📍 *Survey No 41/5 Sai Canary New Rd, Near Balewadi
High Street Balewadi, Pune, Maharashtra 411045*

Contact- 9766502949, 7722089085

 MahaRera Registration Number P52100033776 available on website maharera.mahaonline.gov.in

BALEWADI



The best of
BALEWADI
In your backyard



A space where supremacy knocks on your door. A space that surpasses all the parameters of perfection, giving your lifestyle an upgrade like no other!



Where There's Ample Space For Your Dreams To

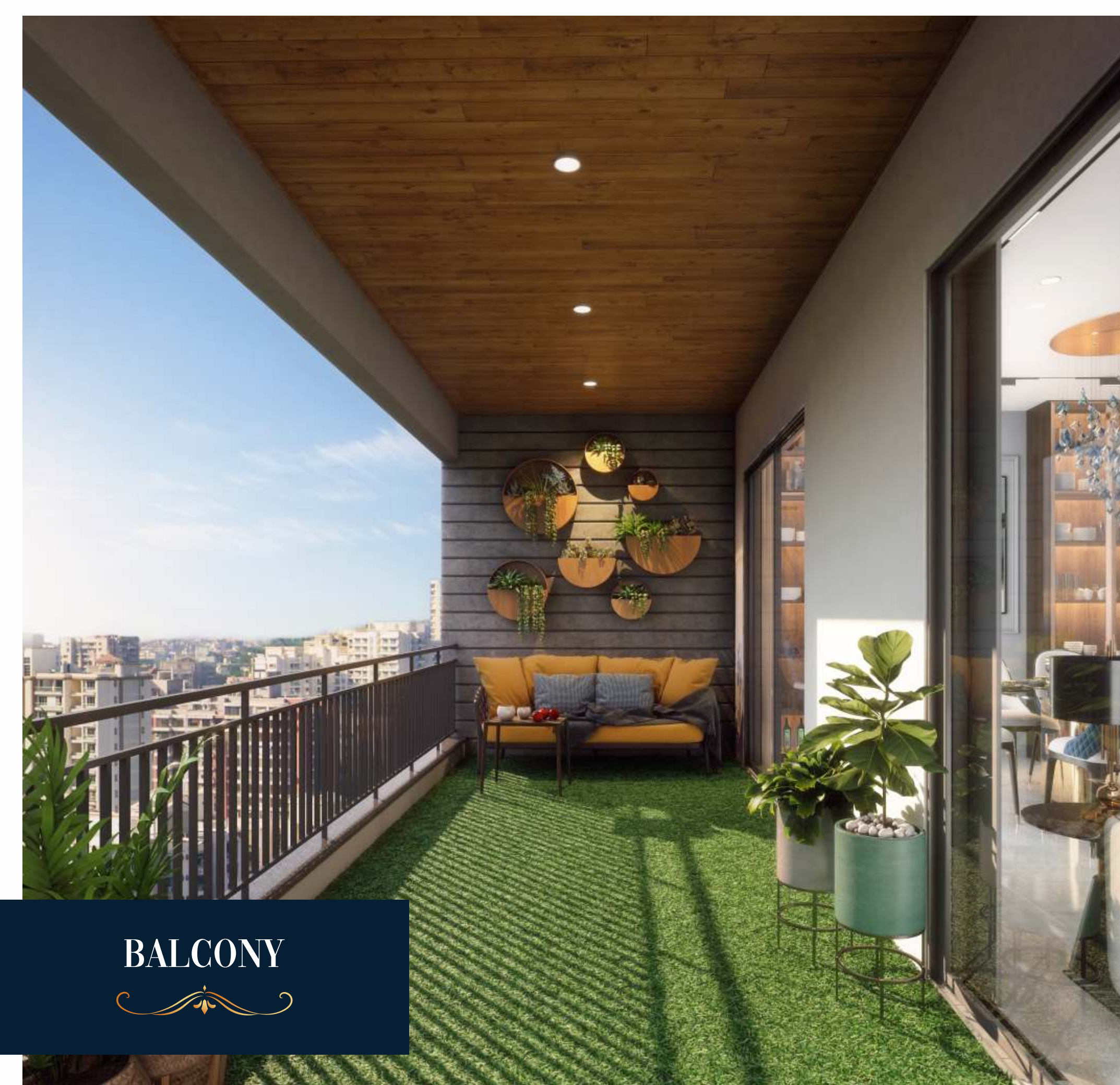
NURTURE
— — — — —
— — — — —



LIVING

Spaces That Echo With Exuberance & Lavishness





BALCONY



HIGHLY SPACIOUS

& Ventilated Spaces Fitting Your Dream Home Goals!



Unraveling intricate details carved by architectural expertise to provide you with a state-of-the-art living experience. A personal touch, quality that screams perfection and corners that embrace beauty everyday.



BEDROOM

Slumbers For The Elite State Of Mind





KITCHEN

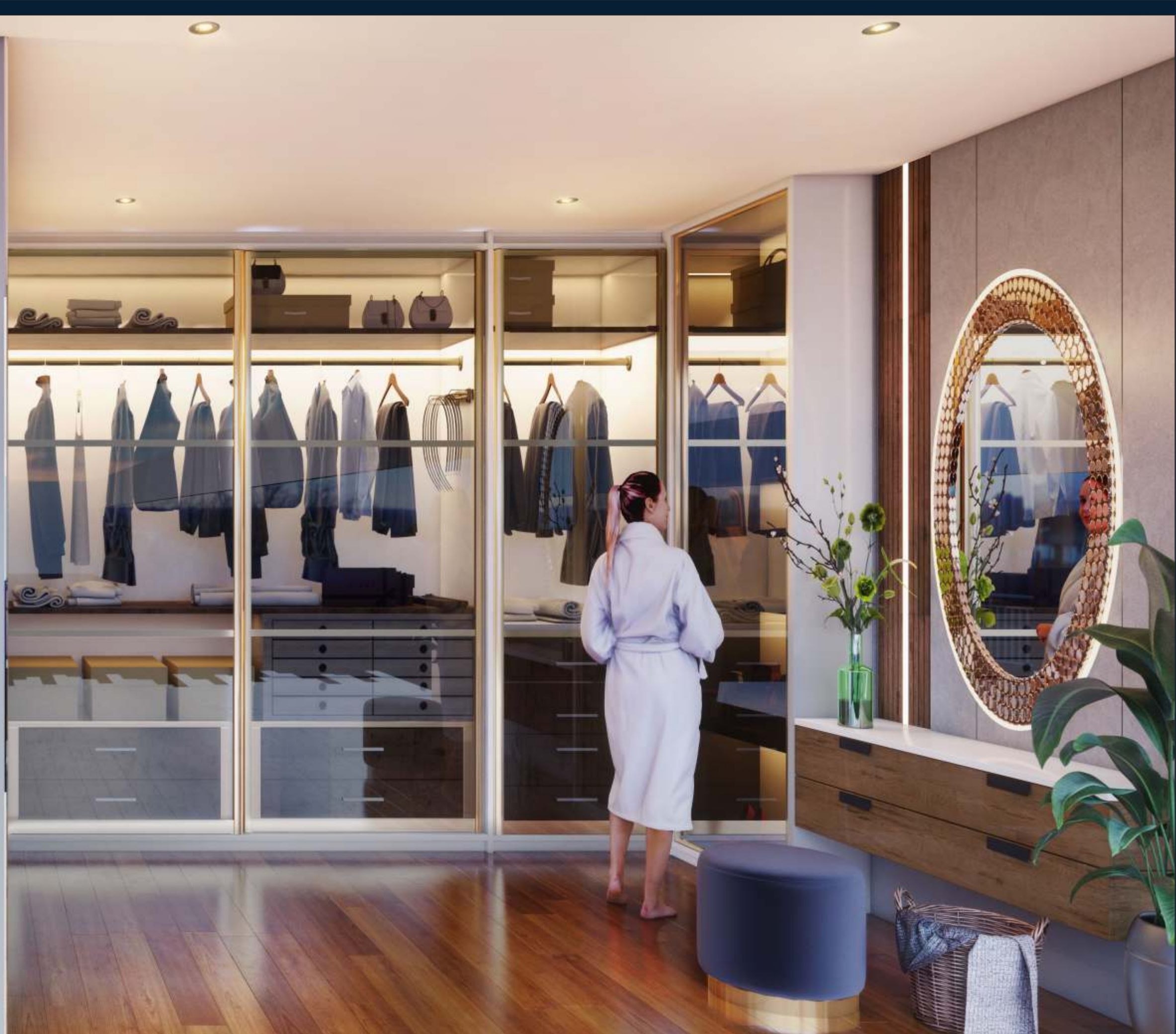
*Spacious & well planned Kitchen
for the master chef in you*





**BATH & WALK-IN
WARDROBE**

Showers That Feel Magnificent



Relax, Rejuvenate & Bond Over An Array Of

AMENITIES



Just like a cherry on a cake, amenities around an abode act like accessories that add a supplementary value quotient to our living.

With Rigned Uptown's thoughtfully designed amenities that are designated for taking care of you and your family's overall development, open doors to a life full of adventure and ease.

11+

PREMIUM
GROUND LEVEL
AMENITIES

15+

ROOFTOP LEVEL
AMENITIES





GROUND

level amenities



- *Party Lawn*
- *Buffet Counter*
- *Gymnasium*
- *Clubhouse*
- *Lawn Area*
- *Stage And Chess Board*
- *Amphi Seating*
- *Play Area (rubber Flooring)*
- *Pergola And Trellis*
- *Gazebo*

ROOFTOP

level amenities



- Seating Area
- Pergola
- Toilet
- Party Lawn
- Stage
- Feature Wall
- Buffet Area With Pergola
- Seating With Pergola
- Open Gym
- Gazebo
- Yoga And Meditation Area
- Pathway



SPECIFICATIONS



STRUCTURE

- *RCC Structure Designed With Earthquake Resistant Frame.*



MASONRY

- *AAC Blocks Masonry Work*



KITCHEN

- *Granite Kitchen Platform With SS Sink & Dado Up To 2' Height*
- *Provision For Washing Machine In Dry Balcony*
- *Additional Sink In Dry Balcony*



UTILITIES

- *Sewage Treatment Plant*
- *Rainwater Harvesting*
- *Underground And Overhead Tanks For Water Storage*
- *Firefighting System*
- *100% Power Backup For Common Areas & Lift*



SECURITY

- *CCTV Cameras For Common Areas*
- *Security Cabin*
- *Boom Barriers*
- *Digital Lock with Key Less Entry*



WALL FINISH

- *Gypsum / POP Finish For Wall At Internal Side With Emulsion Paint*
- *Sand Faced Plaster For Exterior Surface With Weather Proof Paint*



BATHROOMS

- *Glass Partition for Two Master Bathrooms*
- *Concealed Plumbing Of ISI Mark*
- *C.P. Fittings -Jaguar Or Equivalent*
- *Premium Sanitary Fittings - Floor / Wall Mounted - Jaquar Or Equivalent*
- *600 X1200 Designer Dado Wall Tiles Upto Lintel Level*
- *Provision For Electric Geyser Point*
- *Provision For Exhaust Fan Point*



FLOORING

- *800 X 1600 Vitrified Tiles Across The Apartment*
- *200 X 1200 Wooden Finish Anti Skid tiles in the Balcony*
- *Anti-skid Ceramic Tiles For Bathroom, Dry Balcony & Balcony*



ELEVATORS

- *Kone Or Equivalent*



ELECTRIFICATION

- *Concealed Internal Electrical Wiring - Polycab Or Equivalent*
- *Modular Switches - L&T Or Equivalent*
- *Switch Gears - L&T Or Equivalent*
- *Power Points For Refrigerator / Microwave & Other Gadgets In Kitchen*
- *Power Point For Washing Machine In Dry Balcony*
- *Geyser Points In All Toilets*
- *Provision For TV Points In Living & Master Bedroom*
- *Provision For AC Point In All Bedrooms*



DOORS & WINDOWS

- *Main Door with Digital Lock and Keyless Entry*
- *Main Door & Internal Room Doors - Flush Doors with Laminate & Wooden Frames*
- *Bathroom Doors - Flush Doors With Laminate And Granite Frames / WPC Frame*
- *Two Track Aluminium Sliding Windows With Mosquito Nets*
- *Natural Stone Window Sill*
- *Door Hardware - Mortoise Handles of Premium Make*
- *MS Railing in Balconies*

WING 7 A - 8



AREA STATEMENT				
FLAT TYPE	CARPET			CARPET
	FLAT	ENCL BALC	BALC.	
4 BHK	1233.29	113.69	213.34	1560.32





NO COMPROMISES FOR YOUR FAVOURITE LOCATION



Let everyone who visits your home be left in awe with lobbies that scream sophistication and luxury.

Leaving a lasting impression, we want you as well as your guests to feel like they're walking through spaces engulfed in splendour!



BALEWADI
Where everything is around you



Sports/Colleges/Schools {within 1 - 4 km}

- *Balewadi Sports Complex - 2 mins*
- *Bharti Vidyapeeth - 2 mins*
- *Rabindranath Tagore School of Excellence - 2 mins*
- *Vibgyor High - 2 mins*
- *The Orchid School - 5 mins*
- *DAV Public School - 10 mins*
- *Eurokids - 5 mins*
- *Tulips Academy - 5 mins*
- *MITCON - 2 mins*
- *NICMAR - 2 mins*
- *CM International - 3 mins*
- *Footprints Play School - 2 mins*
- *Sanskruti - 2 mins*
- *Kidzee - 2 mins*

Healthcare {within 2 - 6 km}

- *Jupiter Hospital*
- *Columbia Asia Hospital*
- *Lifepoint Multispeciality Hospital*
- *Surya Hospital*
- *Umarji Mother & Child Care*
- *Lifeline Hospital*

Major IT & Work Spaces {within 2 - 4 km}

- *Hinjawadi IT Park*
- *Veritas*
- *Bitwise*
- *Cummins India*
- *Teerth Technospace*
- *Amar Business Park*
- *Xoriant*
- *Siemens*
- *T- Systems*

Malls/Hypermarkets/High Street {within 2 - 5 km}

- *Balewadi High Street*
- *McDonald's*
- *D Mart*
- *R- Mart*
- *KK Bazaar*
- *Xion Mall*
- *The Orchid Hotel*
- *Sadanand Hotel*
- *Vivanta By Taj*
- *Holiday Inn*
- *Westend Mall / Cinepolis*
- *Westside*
- *Phoenix Mall (Wakad)*
- *E- Square*

Public Transport & Connectivity {within 2 - 3 km}

- *Metro Station*
- *Bus Stop*
- *Pune - Mumbai Highway*
- *Mumbai - Bengaluru Highway*