



AMBER

2BHK HOME OF INTELLIGENCE

BANER - SUS



Experience

Joy

The moment you enter the paradise called Saffron Amber, you feel the joy of life. Every homecoming experience is filled with warmth as you enter. This carefully created residential oasis is located in Banner, Pune. It would be perhaps one the last creations of its class to be built in this choicest of neighborhoods. The distinguishing feature that sets it apart from the rest is its unique features and amenities to give you a true feel of joy, something that you would only experience in this divine paradise. Saffron Amber welcomes you.



Sculpted with

Passion

The well designed gateway houses the security station equipped with a sophisticated system of well concealed cameras, sensors and devices to keep you secure at all times. The entrance lobbies to each tower create an ambience of homeliness. Outside your home is an exclusive lobby for you and your neighbors next door. Each apartment is provided with a video door phone to see who's at your door. This is a feature to secure your safety as well as your privacy. You can communicate with the person at your door without having to open it. To enter your apartment you have a keyless entry. Saffron Amber uses technology intelligently by providing biometrics such as face recognition and finger print recognition to provide you with exclusive access to not just your apartment but also other areas within the premises

2 ACRE PROJECT

3 SIDE OPEN LAYOUT

4 APARTMENTS PER FLOOR

12 STOREYS

SPACE PER APARTMENT
690 SQ. FT.



Concern with

Sensitivity

Saffron Amber senses your concerns and your anxieties surrounding your loved ones. It accordingly provides the spaces, systems and the facilities to keep your family safe, comfortable and engaged in meaningful coexistence. Each apartment is designed and created to sense the needs and desires of each member of your family. For instance kitchens are retrofitted with modular systems to optimize space and offer enhanced convenience. A rare feature at Saffron Amber is the Alexa voice service platform that powers an entire smart device ecosystem. Your apartment would have artificial intelligence capabilities to respond to simple queries or perform complex routines to provide general assistance to you and your folks at home.



MODULAR KITCHEN TROLLEY



3 TIER SECURITY*



BIOMETRIC DOOR LOCK*



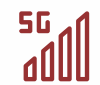
ALEXA POWERED HOME AUTOMATION*



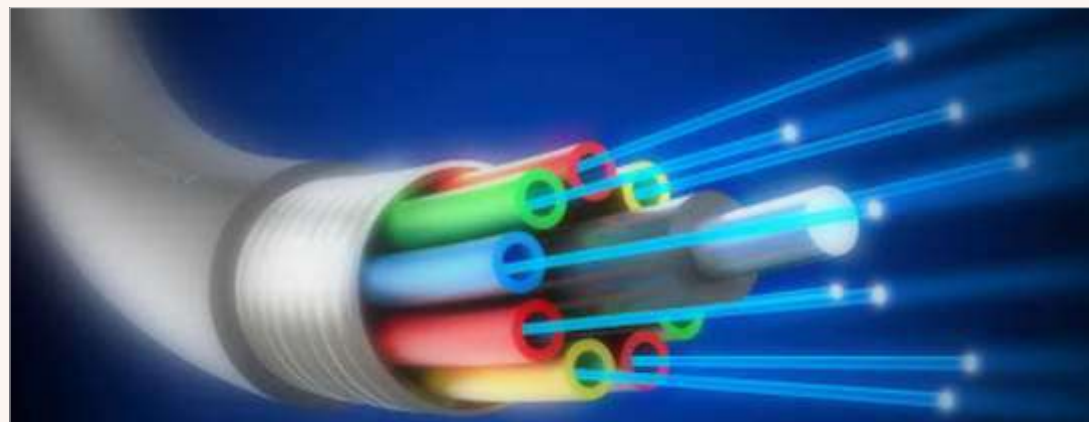
AC IN EACH BEDROOM*



SMART VIDEO DOOR PHONE*



5G FIBER OPTICS IN EACH HOME*



GAS LEAK DETECTOR*



A Home that

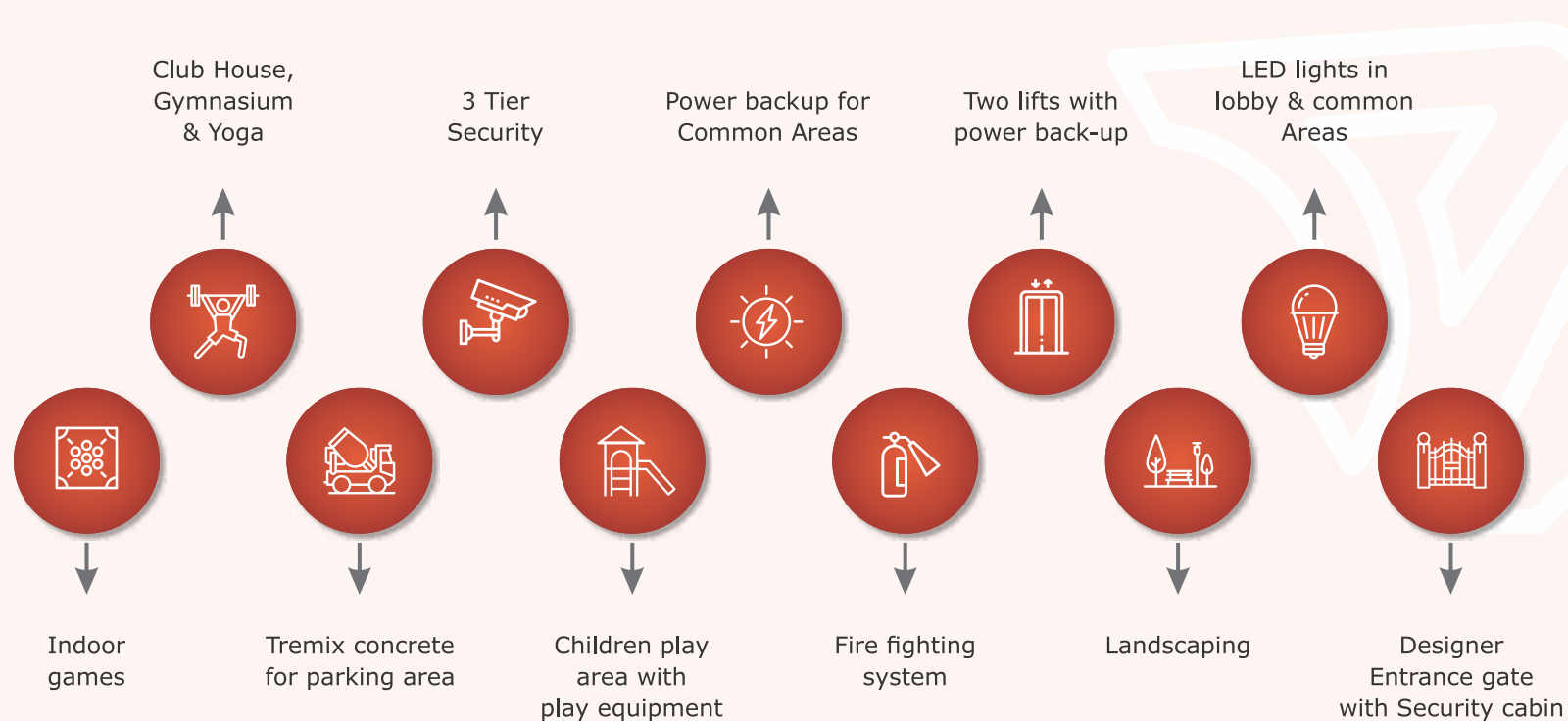
Delights

All work and no play make Jack a dull boy. A cliché elsewhere but at Saffron Amber care has been taken to provide you and your family with all the recreation and entertainment facilities to keep you revitalized and energized at all times. To quote just an example, Saffron Amber provides you with a fully equipped air-conditioned gymnasium and a spa. There would be many more facilities provided within the premises.

All work and no play make Jack a dull boy. A cliché elsewhere but at Saffron Amber care has been taken to provide you and your family with all the recreation and entertainment facilities to keep you revitalized and energized at all times. To quote just an example, Saffron Amber provides you with a fully equipped air-conditioned gymnasium and a spa. There would be many more facilities provided within the premises.

Sustainable Features

Amenities



Sewage Treatment Plant



Water Treatment Plant



Rainwater Harvesting



Common RO System



Solar Water in Common Bathroom



Specifications

R.C.C STRUCTURE

- Earthquake resistant RCC framed structure as per IS codes

WALLS

- External Walls - 6" thick AAC block
- Internal Walls - 4" thick AAC block

WATERPROOFING

- Waterproofing for Terrace, Toilets & Balconies

PLASTER

- External Walls - Sand Face finished
- Internal Walls - Gypsum finished

KITCHEN

- Granite top platform 8ft with stainless steel sink
- Designer ceramic / glazed tiles dado up to Lintel Level
- Jaguar or equivalent c.p. fittings
- Provision for exhaust fan
- Gas leak detector system
- Kitchen Trolley

FLOORING AND TILING

- 2 x 2 Vitrified tiles in Living, Dining, kitchen and Bedrooms

- Anti-skid designer tiles in toilets and terrace

DOORS AND WINDOWS

- Designer main entrance door with wooden frame
- Internal flush doors with wooden frame
- Powder coated 3 track Aluminium windows and sliding doors for Terrace with Mosquito net
- Granite door frames for toilets
- M.S. safety grills for all windows
- Granite window sill for all windows
- Provision for Exhaust Fan in Kitchen and Washrooms

UTILITY AREA OUTSIDE THE KITCHEN:

- Separate space for utility dry terrace
- Electrical points for washing machine
- Ample points for Washing Machine with inlet and outlet provision

TOILETS

- Branded Sanitary fittings with provision of Hot and Cold Mixer
- Commode with jet spray
- Designer ceramic/ glazed tiles dado up to lintel level

- Solar water heating system in common toilet
- Provision for water heater and exhaust fan in all toilets

PLUMBING

- Concealed fittings & pipes with proper joints using chemicals
- Provision for washing machine point in dry balcony

ELECTRICAL INSTALLATION WORKS

- Concealed and fire resistant wires
- ELCB, MCB, Distribution boxes
- Ample light points with modular Switches
- Cable and telephone points in living and master bedroom
- Ac point in all bedrooms
- Broadband provision in each apartment
- Provision for exhaust fan in kitchen and bathroom
- Provision for inverter point

PAINTING

- Internal walls - O.B.D. paint
- External Wall - Water resistant paint
- Grills and railings - Oil paint

HOME THAT FEELS

Each element of Saffron Amber has been created with utmost care using only the best materials available in the market. The fixtures showcase all the premium makes in their respective functions and there is zero compromise in quality, vendor appointment and workmanship. For example, Saffron Amber strictly uses 5G fiber optics in its communication systems. Be it elevators, security systems, sanitary fixtures or simply the steel, brick and mortar, Saffron Amber uses only the best of the best.



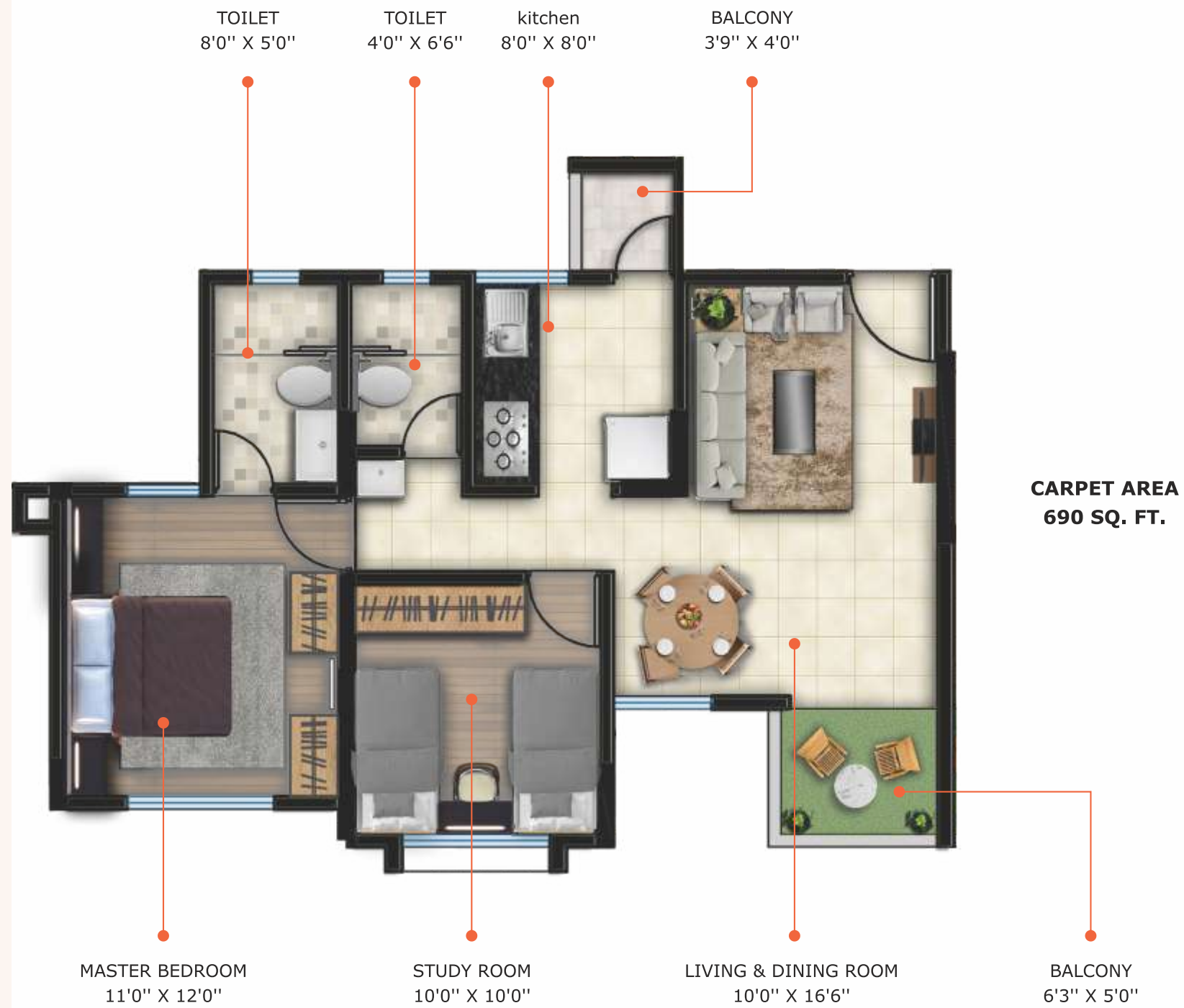


'A' Wing



'B' Wing





FLAT LAYOUT



2BHK CUT SECTION



LOCATION MAP

Key Distances

IT PARK

Kirloskar Brothers	200 m
Teerth Technospace	400 m
Mercedes Benz Showroom	800 m
Bitwise	850 m
Hinjewadi IT Park	6 km

EDUCATION INSTITUTE

Vibgyor High School	220 m
NSG Knowledge City	500 m
Balewadi Sports Stadium	1 km
Pune University	8 km
Bharathi Vidyapeeth/MITCON	2 km
Orchid School	2.5 km

ENTERTAINMENT

The Orchid / VIITS	1 km
D Mart	2.3 km
Sunny's World	3.5 km
Cinepolis Westend	6.7 km
E- Square	9 km

PUBLIC TRANSPORT

Shivajinagar Station	12 km
Pune Station	15 km
Airport	20 km

HOME THAT PROTECTS

Saffron Amber not only protects you and your loved ones but also your interests. The creators of Saffron Amber take pride in their healthy policies and business practices built on a foundation of integrity. Saffron Developers is a team of committed individuals that believes in providing meaningful and strategically located development and edifices that mark a high standard of construction quality and lifestyle eminence. Over the past decade, the group has left its mark on the landscape of Western Pune offering premium residential monuments such as 10 Orchid - Balewadi, Satyam Shivam - Baner Road, Orchid Serenity and Satyam Shivam - Wakad. The group also has to its credit the creation of Samruddhi Swapnashilpa in Katraj as it continues in its unrelenting efforts to push the envelope and introduce new projects to raise the bar of premium lifestyle in Pune.

The group takes forward its vision by leveraging its tried and tested formula of premium property development and consistent customer service to percolate into the hearts of the newer landscapes of the Pune region.

PROJECT BY
 **SAFFRON DEVELOPERS**



PROJECT BY

Site Address: Sr. No.28/3/1, Near Vibgyor School ,
Behind Kirlokar Brothers Limited, Sns, Pune, Maharashtra - 411021



RERA NO: P52100019905
maharera.mahaonline.gov.in

This brochure is an imaginary concept and the plans shown need not to be scale. All plans are subject to accommodate the changes required as per the sanctioning authorities. All amenities and specifications are as per availabilities and discretion of the developer. Nature and locations of all amenities and proposed development shown in the proposed master plan can be added, omitted or shifted as per the developer's discretion. All furniture/accessories shown are purely indicative. (For private circulation only)